

## Observation Sequences for Grades K-3

---

### **Observation Sequence #1**

#### *A Whale is a Mammal*

In this observation sequence, the students will observe a fish and video footage of whales to compare a fish to a mammal. They will focus on the characteristics of mammals, including breathing oxygen from the air, giving live birth, producing milk, being warm-blooded, and having hair.

Have *Observation Sequence Sheet #1: A Whale is a Mammal* and a pencil for the students to use during this observation sequence.

### **Observation Sequence #2**

#### *Flippers and Flukes: The External Anatomy of a Whale*

In this observation sequence, the student will observe video footage of whales and learn the external anatomy of a whale. They will focus on the flukes, dorsal fins, pectoral fin (flipper), blowhole, eye, and mouth.

Have *Observation Sequence Sheet #2: Flippers and Flukes* and a pencil for the students to use during this observation sequence.

### **Observation Sequence #3**

#### *Whales in the Wild: Whale Identification*

Students will observe video footage of whales to learn how scientists identify whales in the wild.

Have *Observation Sequence Sheet #3: Whale Identification*, a copy of the *Field Guide to Whales* (several students can share), and a pencil for the students to use during this observation sequence.

### **Sample Schedule**

12:00	Connect: Welcome to the Ocean Institute
12:10	Introduction to Whales
12:15	<i>Observation Sequence #1: Whales are Mammals</i>
12:25	<i>Observation Sequence #2: Flippers and Flukes</i>
12:40	<i>Observation Sequence #3: Whale Identification</i>
12:45	Questions and Answers
12:50	Disconnect

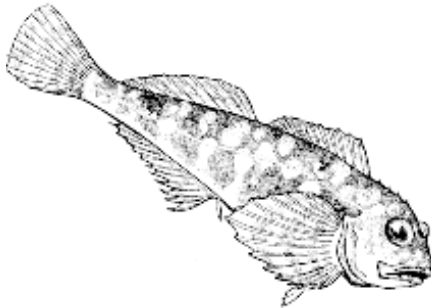
## Observation Sequence #1: A Whale is a Mammal

---

**Whales look like fish, but they are really mammals. Do you know the difference?**

1. Whales breathe through their \_\_\_\_\_, and fish breathe through their \_\_\_\_\_.
2. A whale's tail is called a \_\_\_\_\_, and a fish tail is called a \_\_\_\_\_.
3. Whales are \_\_\_\_\_-blooded, and fish are \_\_\_\_\_-blooded.
4. A baby fish is hatched from an \_\_\_\_\_, and a whale calf is born \_\_\_\_\_.

### Fish



### Words to use:

Fin  
Fluke  
Egg  
Alive  
Cold  
Warm  
Gills  
Lungs

---

### Humpback Whale



## Observation Sequence Sheet #2: Flippers & Flukes

Fill in the names of the whale body parts using the words below:

**Flippers**

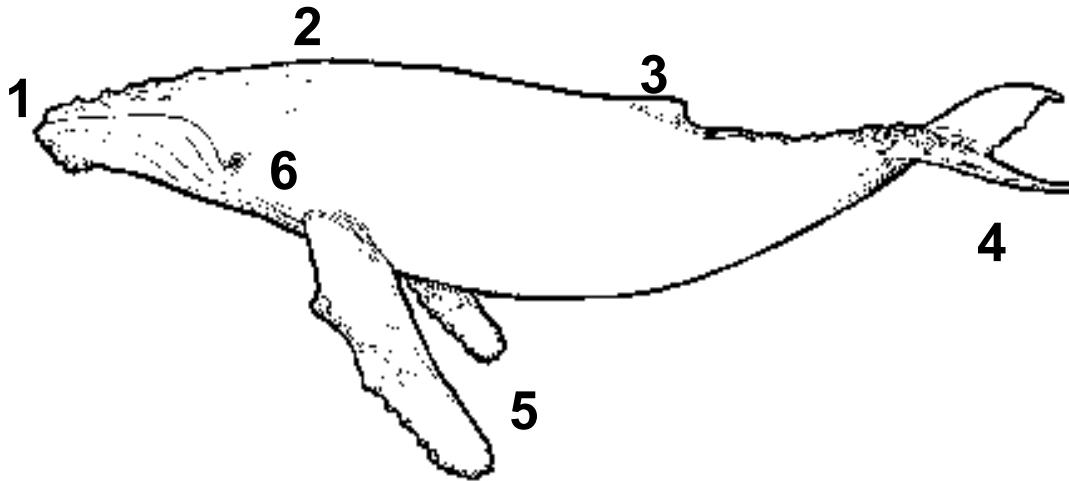
**Eye**

**Mouth**

**Dorsal Fin**

**Blowholes**

**Flukes**



1) \_\_\_\_\_

2) \_\_\_\_\_

3) \_\_\_\_\_

4) \_\_\_\_\_

5) \_\_\_\_\_

6) \_\_\_\_\_

**Humpback Whale**

## Observation Sequence #3: Whale Identification

---

There are many different kinds of whales. Scientists can identify whales by watching them as they swim. They might look at the shape of the whale's head, flippers, body, or flukes and write down what they see. Then they can match what they see with pictures in a field guide to find out what type of whale it is.

1. Watch the whale on the screen.
2. Circle the words that describe the whale that you see.
3. Then use the field guide to find out what type of whale it is.

**Bumps on Head and Jaw**

**Square Head**

**Barnacles on Head**

**Long Flippers**

**Tall Dorsal Fin**

**Short Flippers**

**Slim Head**

**White Patch  
Behind Eyes**

**Long Beak**

**Bumps between  
Dorsal Fin and Flukes**

**Short Dorsal Fin**

**Write the name of the whale:** \_\_\_\_\_